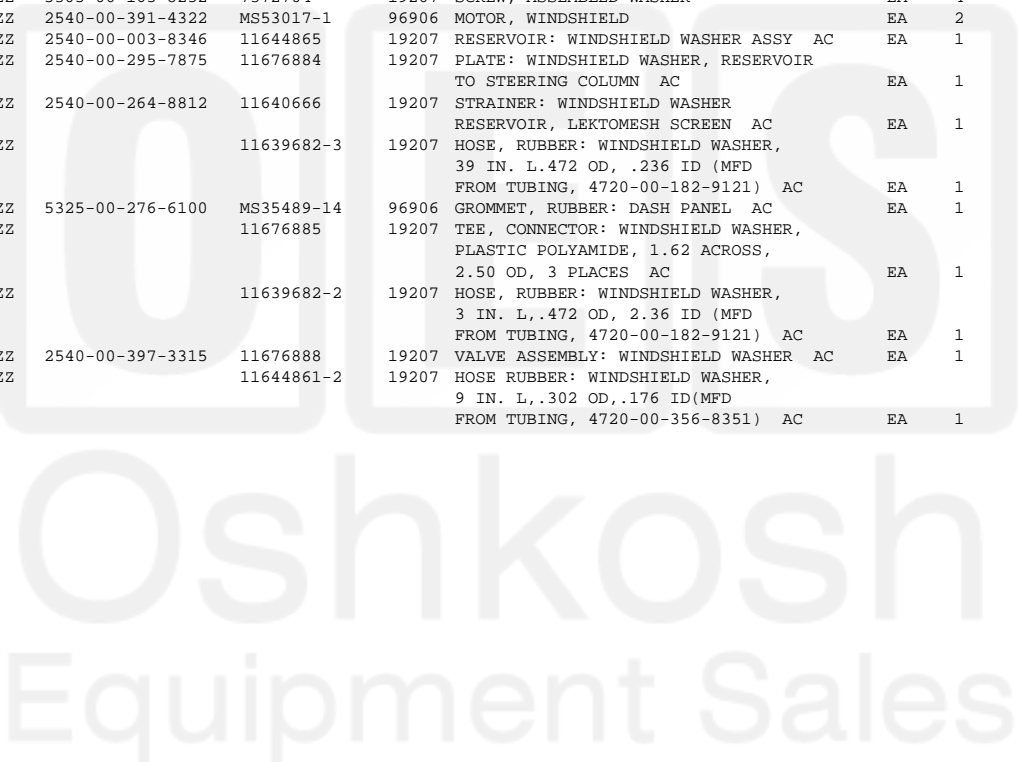


Current part is item (1) on diagram. Available at [www.oshkosequipment.com](http://www.oshkosequipment.com)

(1) (a) FIG. NO.	(2) (b) ITEM NO.	(3) SMR CODE	(3) NATIONAL STOCK NUMBER	(4) PART NUMBER	(5) FSCM	(6) DESCRIPTION USABLE ON CODE	(7) U/M	(8) INC IN UNIT
2202-ACCESSORY ITEMS								
320	1	PAOZZ	5310-00-705-8965	7058965	19207	NUT, PLAIN, CAP: CLAMPING, WIND- SHIELD WIPER ARM TO MINOR	EA	2
320	2	PAOZZ	2540-00-050-0810	MS53049-1	96906	ARM, WINDSHIELD WIPER: ADJ, 7-1/2 CLOSED, 12 EXTENDED	EA	2
320	3	PAOZZ	2540-00-255-9212	MS53048-10	96906	BLADE, WINDSHIELD WIPER: 10 IN LG	EA	2
320	4	PAOZZ	5305-00-855-0957	MS24629-46	96906	SCREW, TAPPING, THREAD FORMING	EA	4
320	5	PAOZZ	5340-00-984-8540	MS21333-102	96906	CLAMP, ELECTRICAL	EA	1
320	6	PAOZZ	5340-00-057-2890	MS21333-3	96906	CLAMP, LOOP	EA	3
320	7	PAOZZ	4730-00-727-9627	7279627	19207	CLAMP, HOSE: WINDSHIELD WIPER HOSE CONNECTIONS	EA	8
320	8	MOOZZ		7331422	19207	HOSE, RUBBER: WINDSHIELD WIPER (1 PIECE 15-1/2 IN. LG, 1 PIECE 7 IN. LG. 1 PIECE 2 IN. 1 PIECE 34 IN. LG) (58-1/2 IN. REQUIRED TOTAL) MFD FROM HOSE, 4720-00-203-2668)	EA	1
320	9	PAOZZ	4730-00-737-2701	7372701	19207	TEE, HOSE: WINDSHIELD WIPER MOTOR LINE	EA	1
320	10	MOOZZ		8689206	19207	TUBE, COPPER: SEAMLESS, COLD-DRAWN SOFT ANLD, 1/4 OD, 0.035 WALL THK, 17-1/2 IN LG. (MFD FROM TUBE, 4710- 00-277-5525)	EA	1
320	11	PAOZZ	5305-00-165-8252	7372704	19207	SCREW, ASSEMBLED WASHER	EA	4
320	12	PAOZZ	2540-00-391-4322	MS53017-1	96906	MOTOR, WINDSHIELD	EA	2
321	1	PAOZZ	2540-00-003-8346	11644865	19207	RESERVOIR: WINDSHIELD WASHER ASSY AC	EA	1
321	2	XBOZZ	2540-00-295-7875	11676884	19207	PLATE: WINDSHIELD WASHER, RESERVOIR TO STEERING COLUMN AC	EA	1
321	3	PAOZZ	2540-00-264-8812	11640666	19207	STRAINER: WINDSHIELD WASHER RESERVOIR, LEKTOMESH SCREEN AC	EA	1
321	4	MOOZZ		11639682-3	19207	HOSE, RUBBER: WINDSHIELD WASHER, 39 IN. L. 472 OD, .236 ID (MFD FROM TUBING, 4720-00-182-9121) AC	EA	1
321	5	PAOZZ	5325-00-276-6100	MS35489-14	96906	GROMMET, RUBBER: DASH PANEL AC	EA	1
321	6	PAOZZ		11676885	19207	TEE, CONNECTOR: WINDSHIELD WASHER, PLASTIC POLYAMIDE, 1.62 ACROSS, 2.50 OD, 3 PLACES AC	EA	1
321	7	MOOZZ		11639682-2	19207	HOSE, RUBBER: WINDSHIELD WASHER, 3 IN. L, .472 OD, 2.36 ID (MFD FROM TUBING, 4720-00-182-9121) AC	EA	1
321	8	PAOZZ	2540-00-397-3315	11676888	19207	VALVE ASSEMBLY: WINDSHIELD WASHER AC	EA	1
321	9	MOOZZ		11644861-2	19207	HOSE RUBBER: WINDSHIELD WASHER, 9 IN. L, .302 OD, .176 ID (MFD FROM TUBING, 4720-00-356-8351) AC	EA	1



Current part is item (1) on diagram. Available at [www.oshkosequipment.com](http://www.oshkosequipment.com)

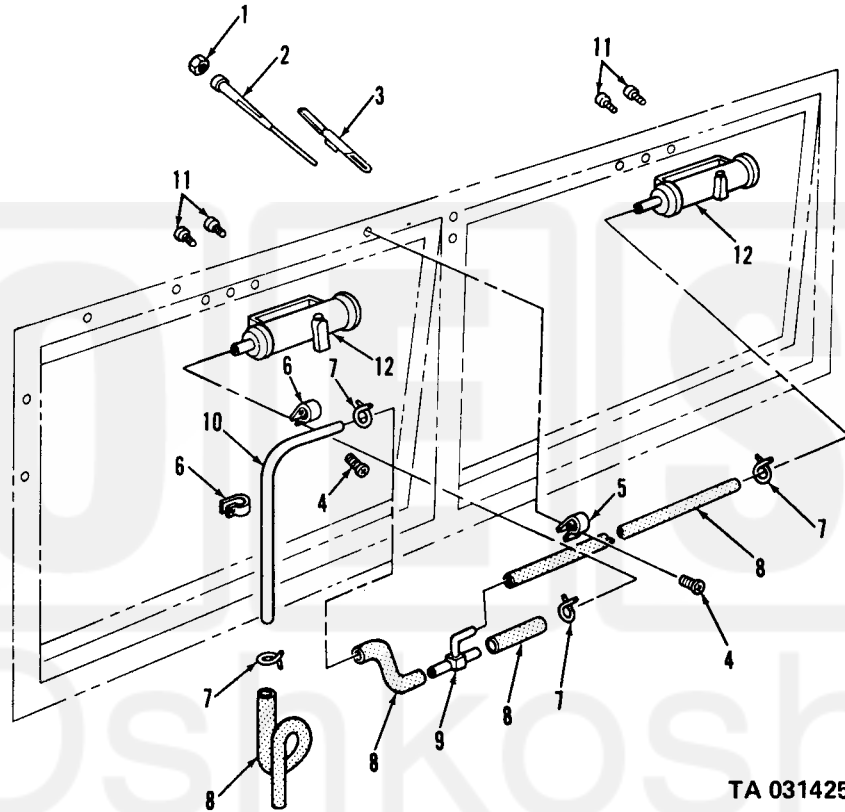


Figure 320. Windshield wipers, motors.